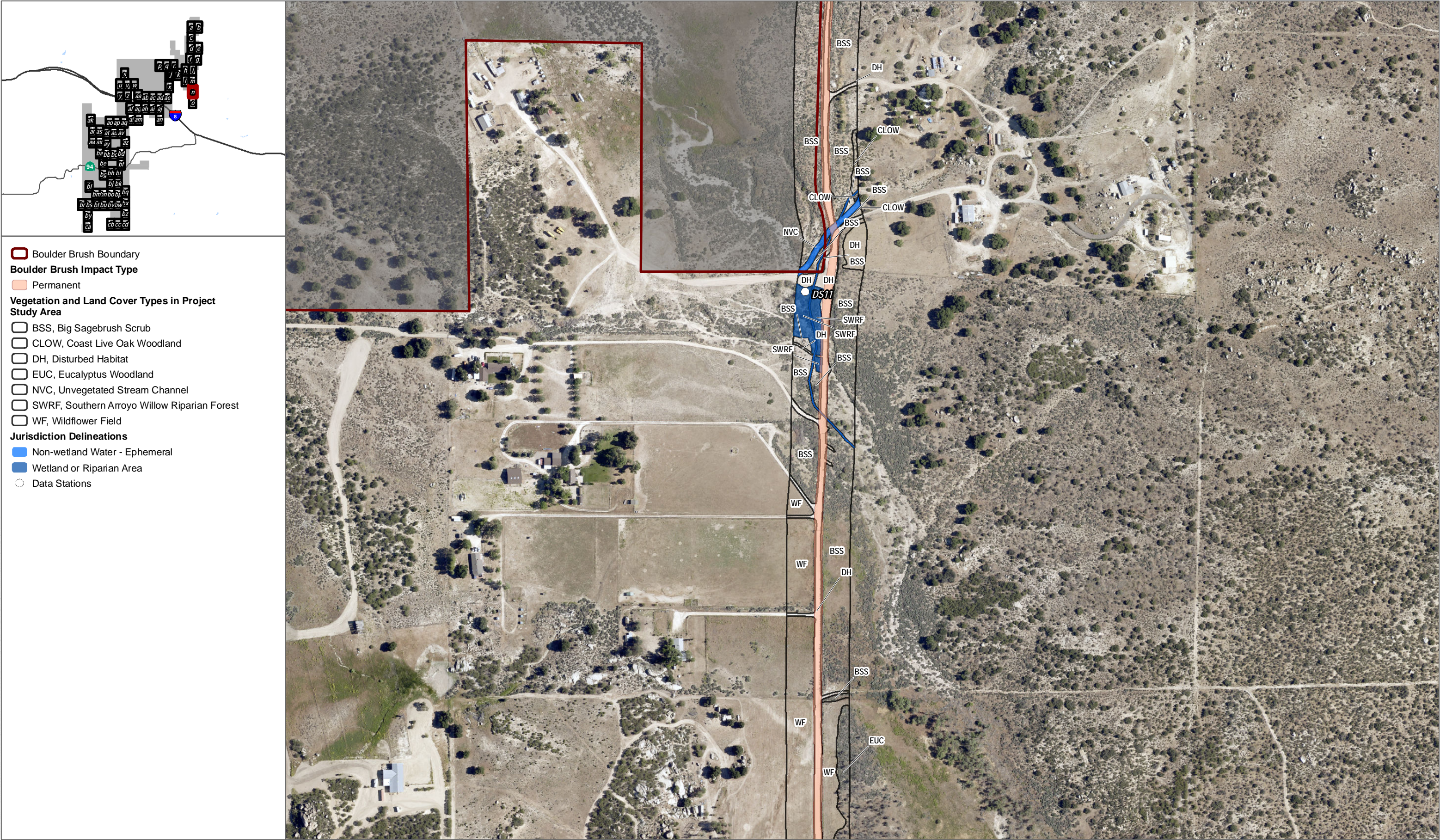




SOURCE: Source: SANGIS 2017

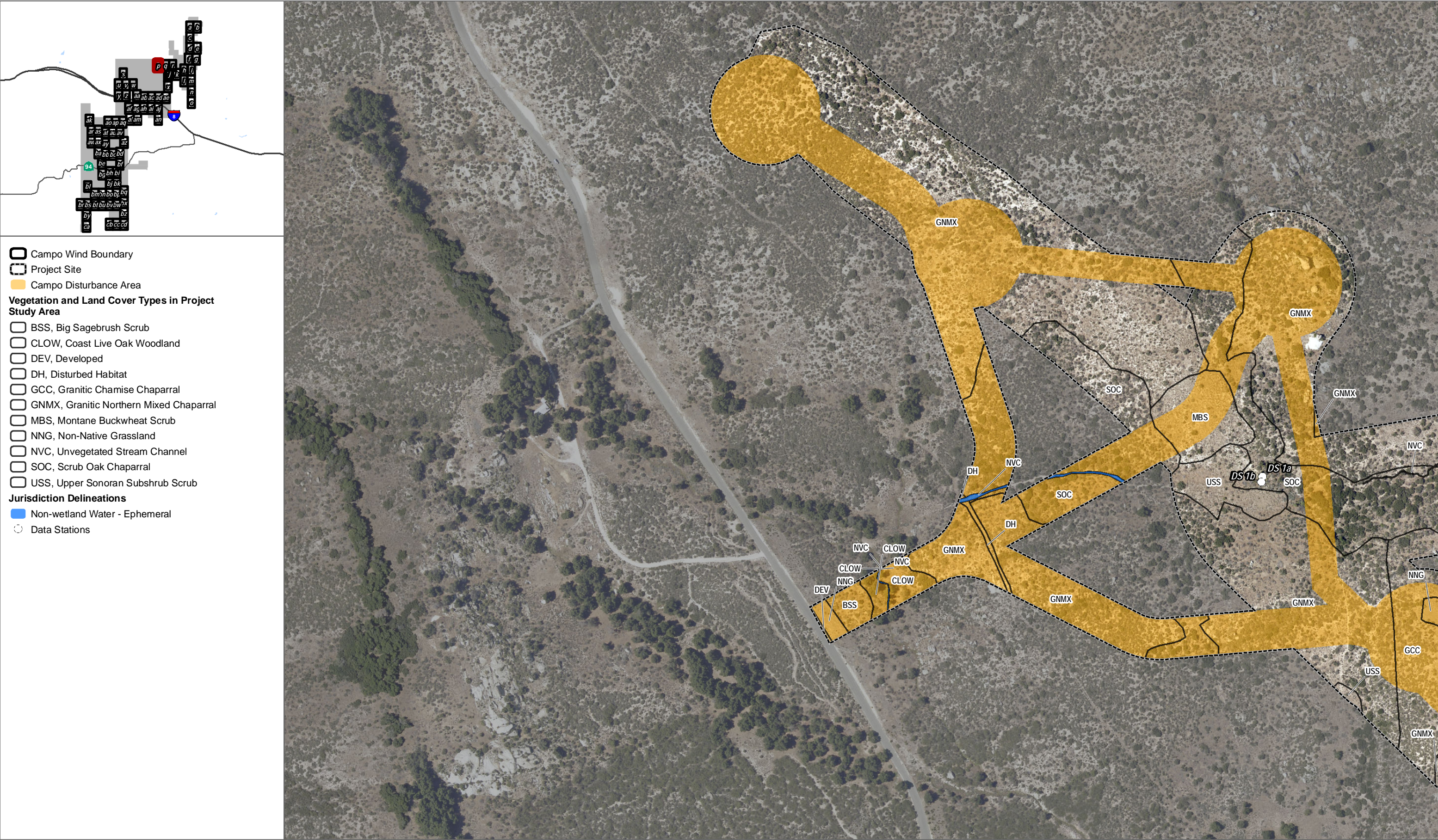


SOURCE: Source: SANGIS 2017

FIGURE 14n

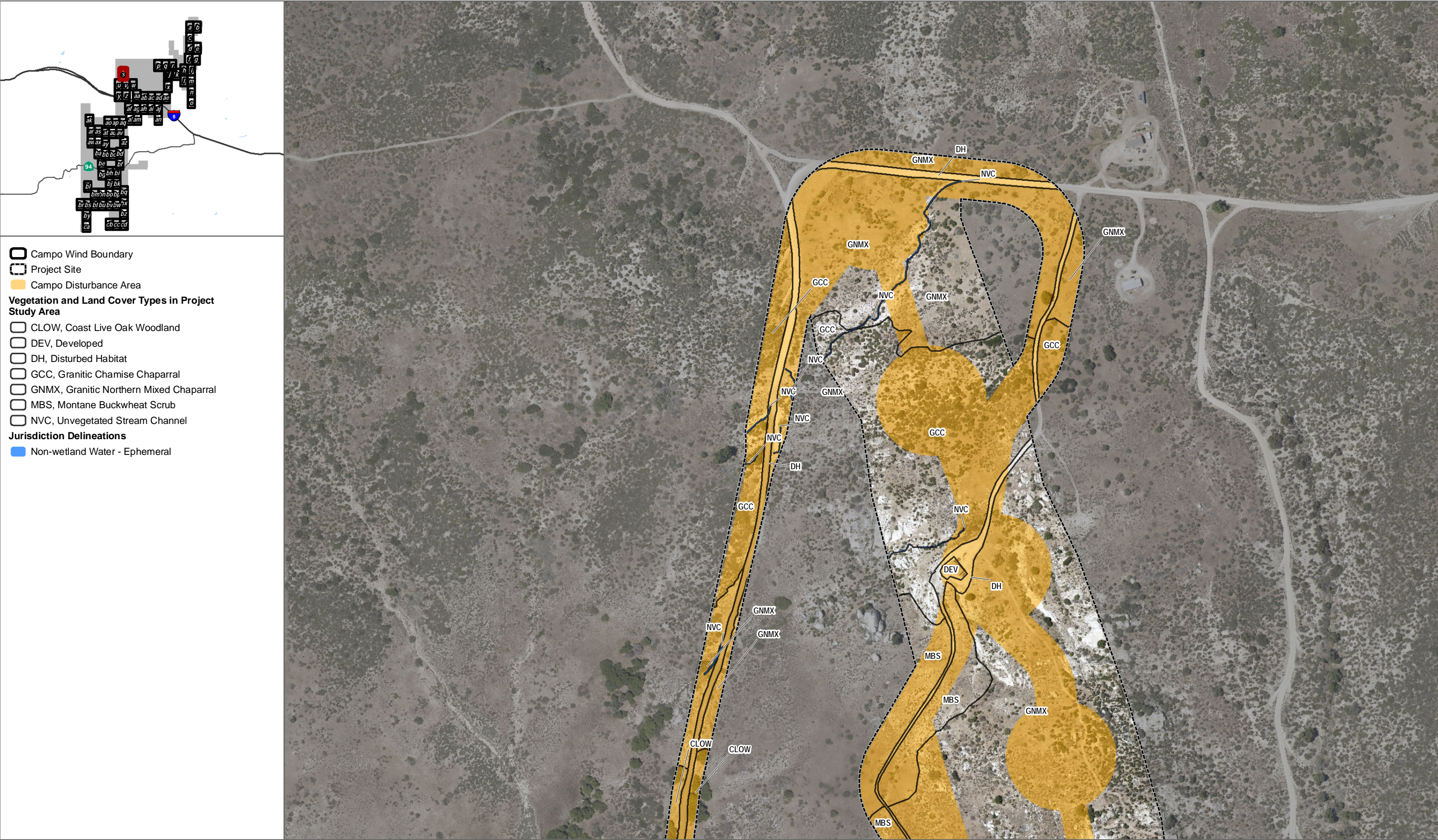
Impacts to Vegetation Communities and Landcovers

Campo Wind with Boulder Brush Facilities Biological Technical Report



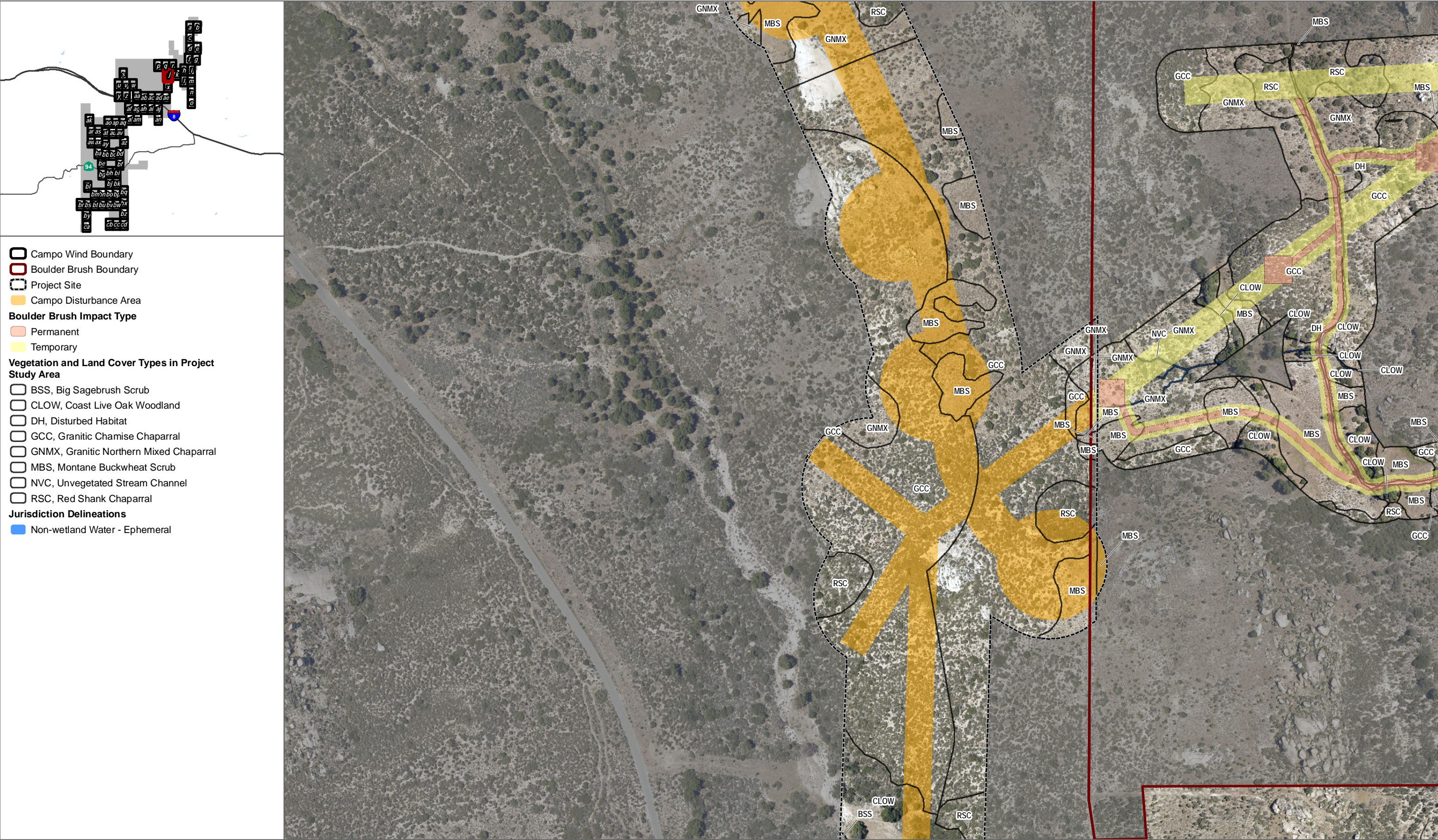
SOURCE: Source: SANGIS 2017

FIGURE 14p
Impacts to Vegetation Communities and Landcovers
Campo Wind with Boulder Brush Facilities Biological Technical Report



SOURCE: Source: SANGIS 2017

FIGURE 14s
Impacts to Vegetation Communities and Landcovers
Campo Wind with Boulder Brush Facilities Biological Technical Report

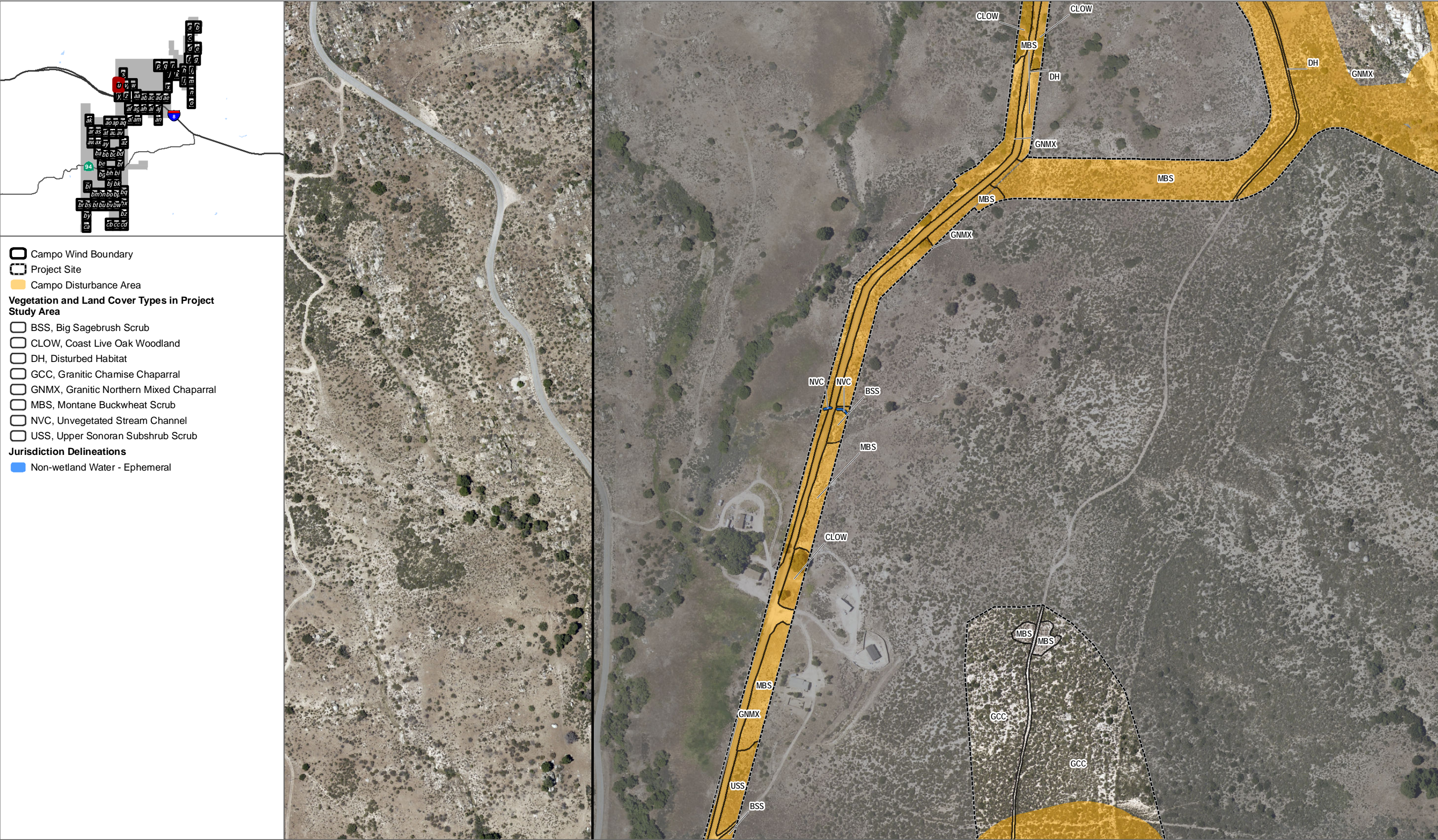


SOURCE: Source: SANGIS 2017

FIGURE 14t

Impacts to Vegetation Communities and Landcovers

Campo Wind with Boulder Brush Facilities Biological Technical Report



SOURCE: Source: SANGIS 2017

DUDEK

0 200 400 Feet

FIGURE 14u

Impacts to Vegetation Communities and Landcovers

Campo Wind with Boulder Brush Facilities Biological Technical Report



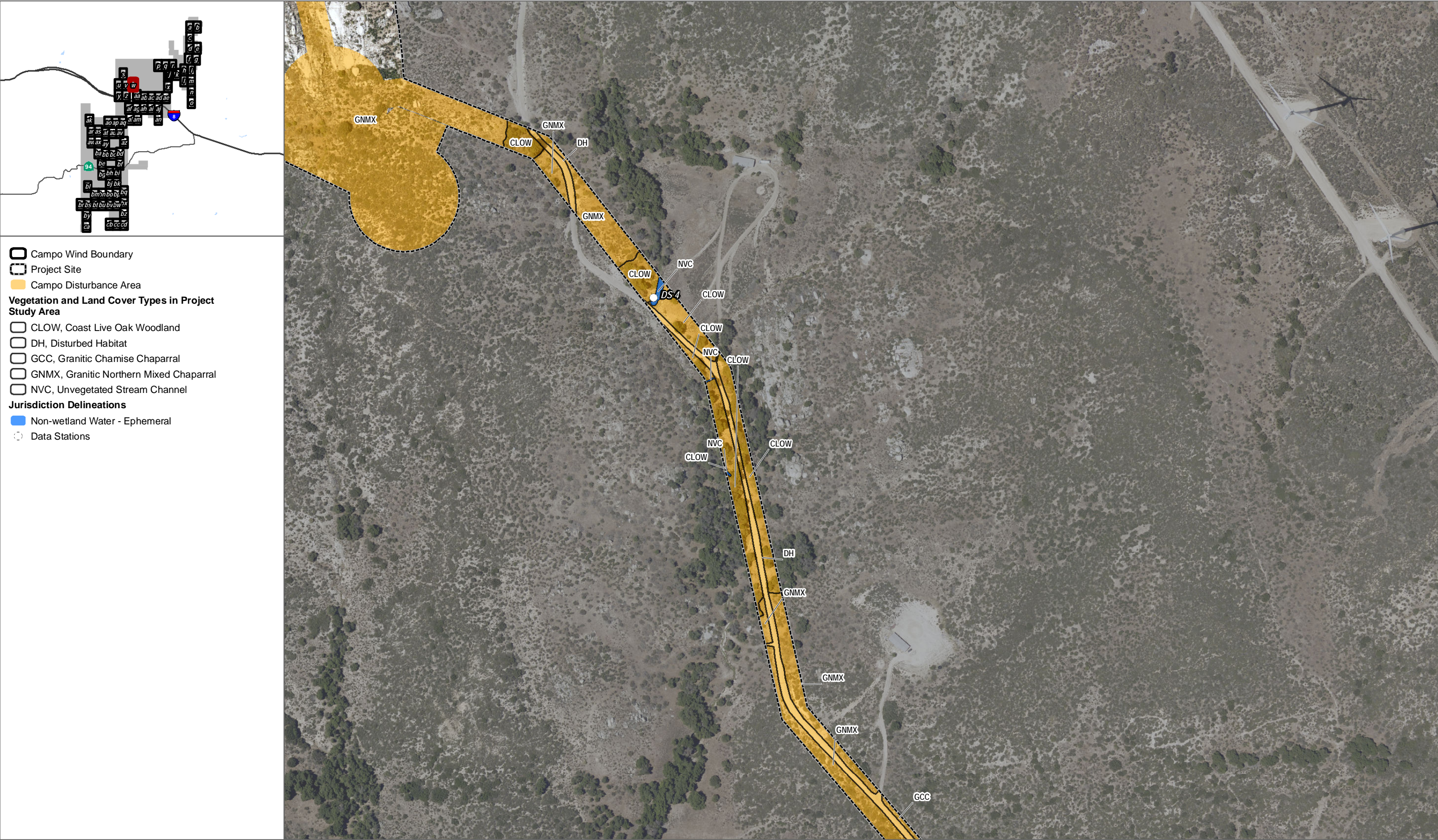
SOURCE: Source: SANGIS 2017

FIGURE 14v

Impacts to Vegetation Communities and Landcovers

Campo Wind with Boulder Brush Facilities Biological Technical Report

DUDEK 0 200 400 Feet



SOURCE: Source: SANGIS 2017

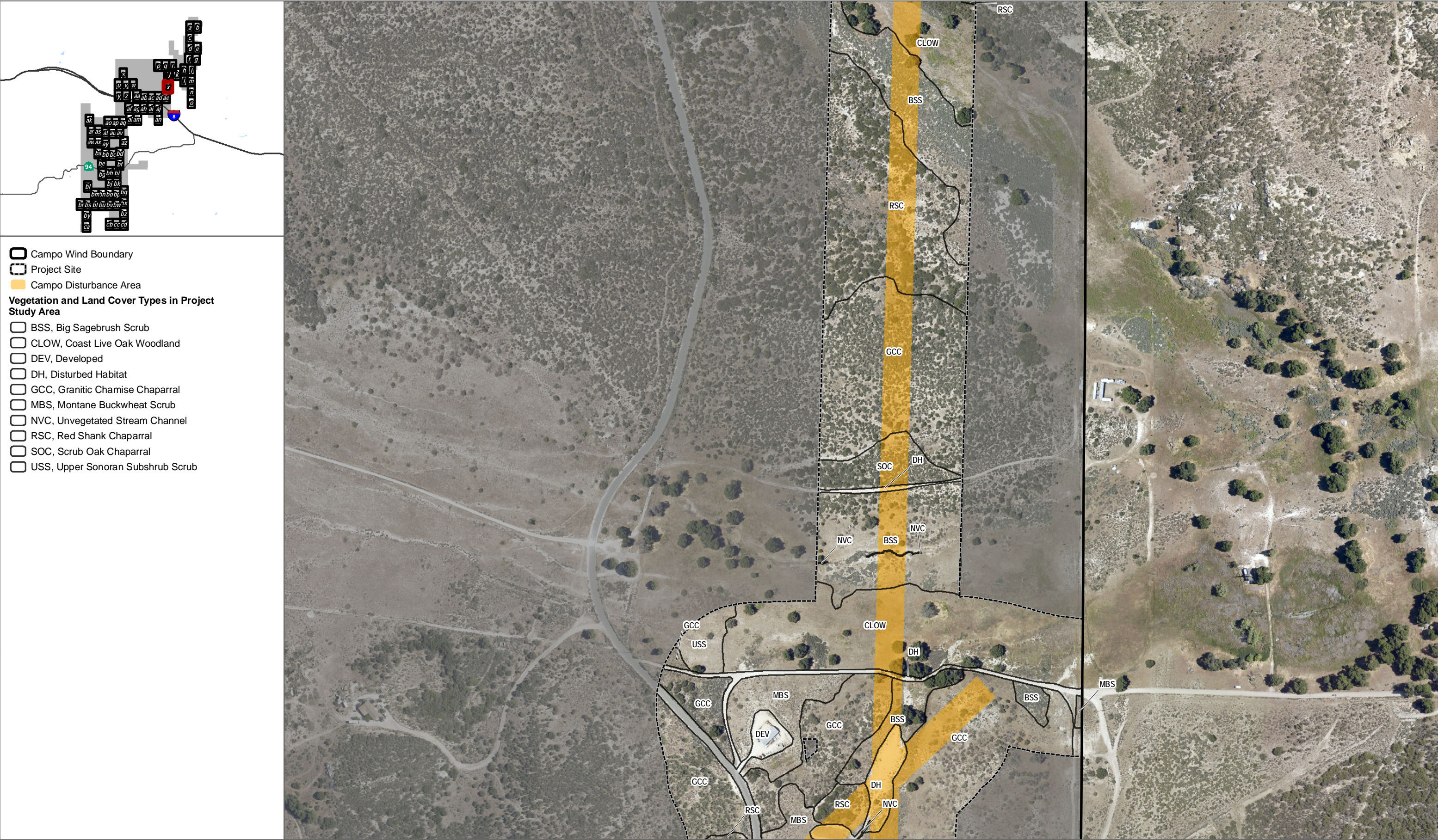
FIGURE 14w

Impacts to Vegetation Communities and Landcovers

Campo Wind with Boulder Brush Facilities Biological Technical Report

DUDEK

0 200 400 Feet

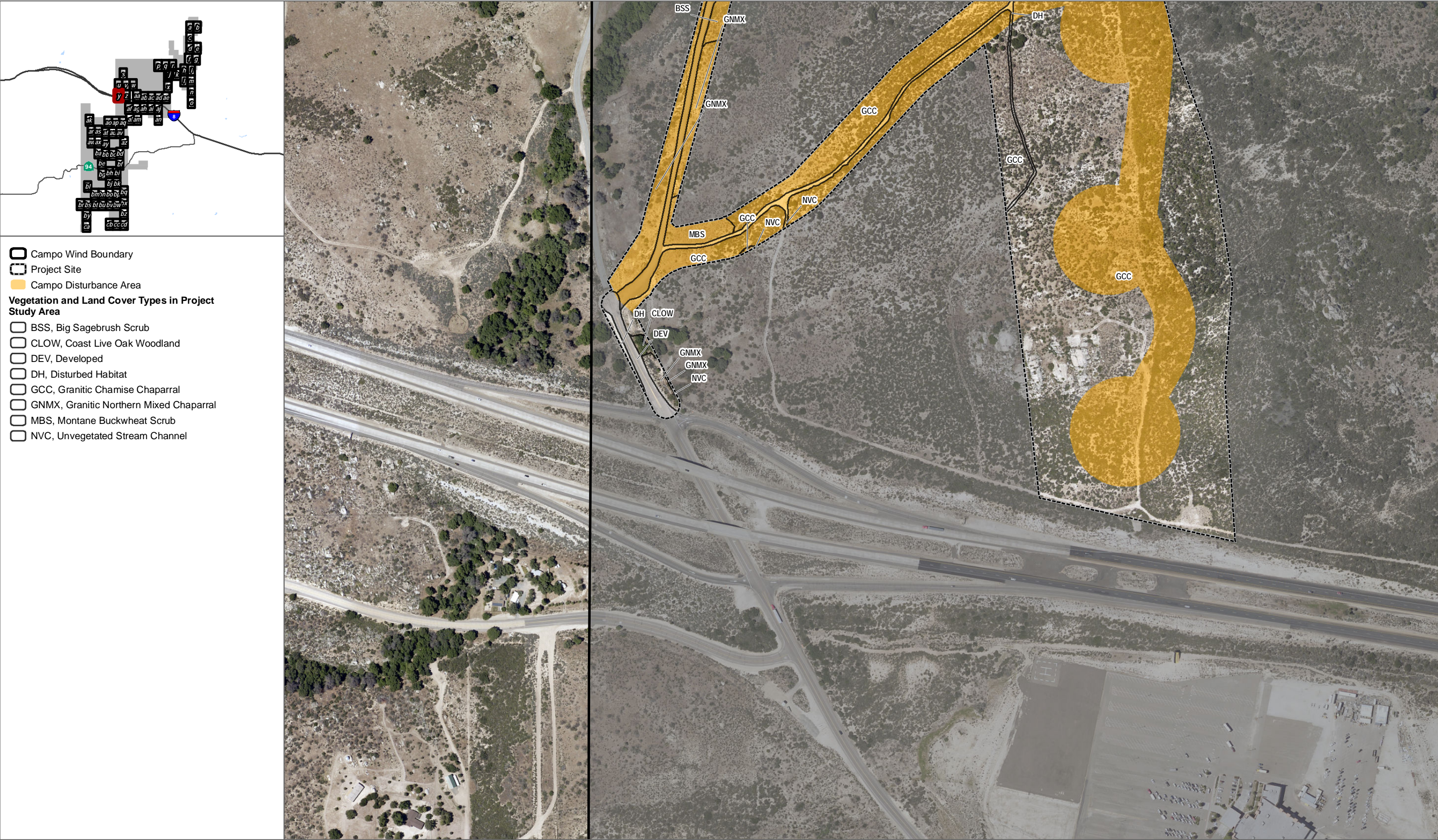


SOURCE: Source: SANGIS 2017

FIGURE 14x

Impacts to Vegetation Communities and Landcovers

Campo Wind with Boulder Brush Facilities Biological Technical Report



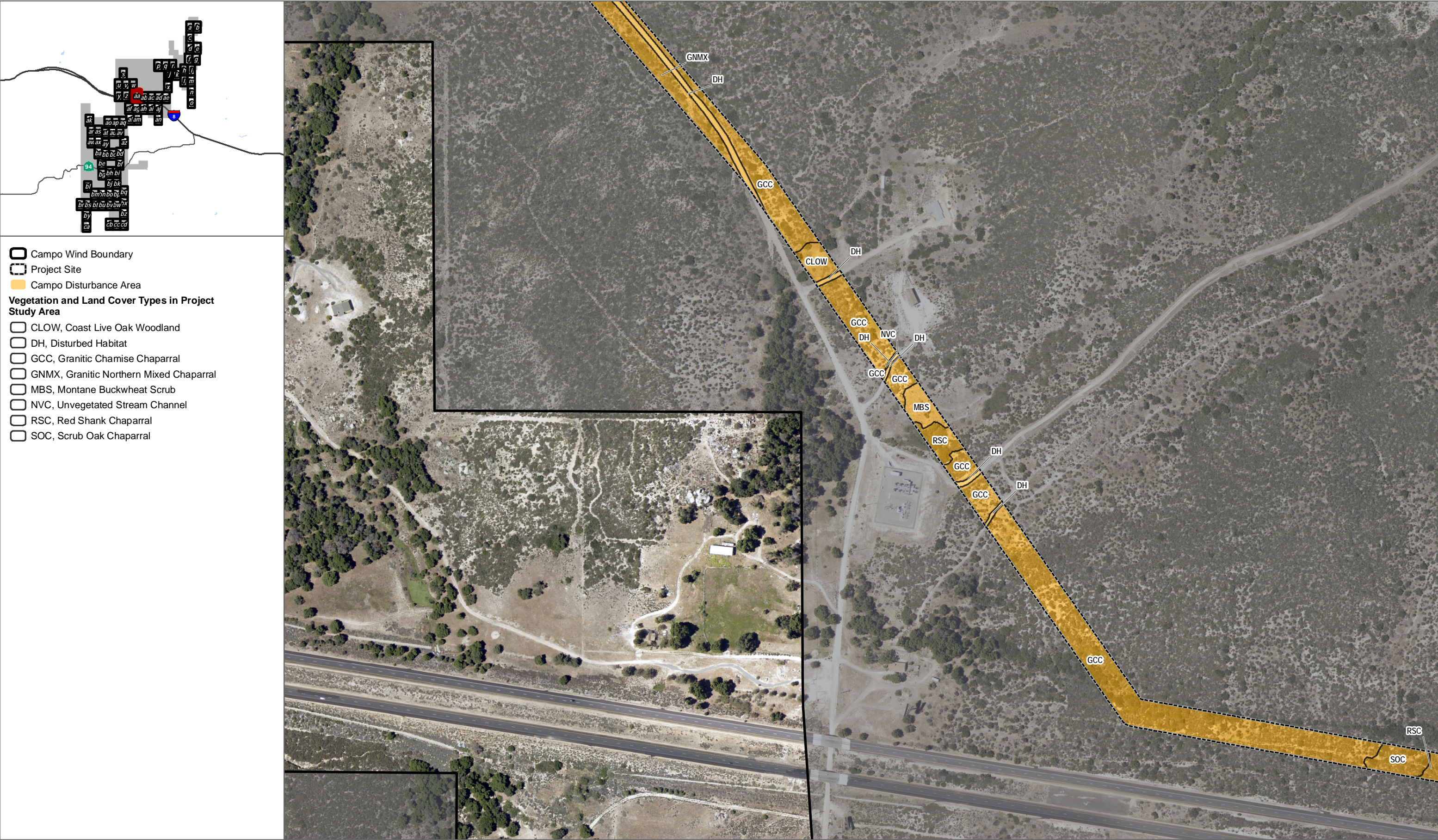
SOURCE: Source: SANGIS 2017

FIGURE 14y

Impacts to Vegetation Communities and Landcovers

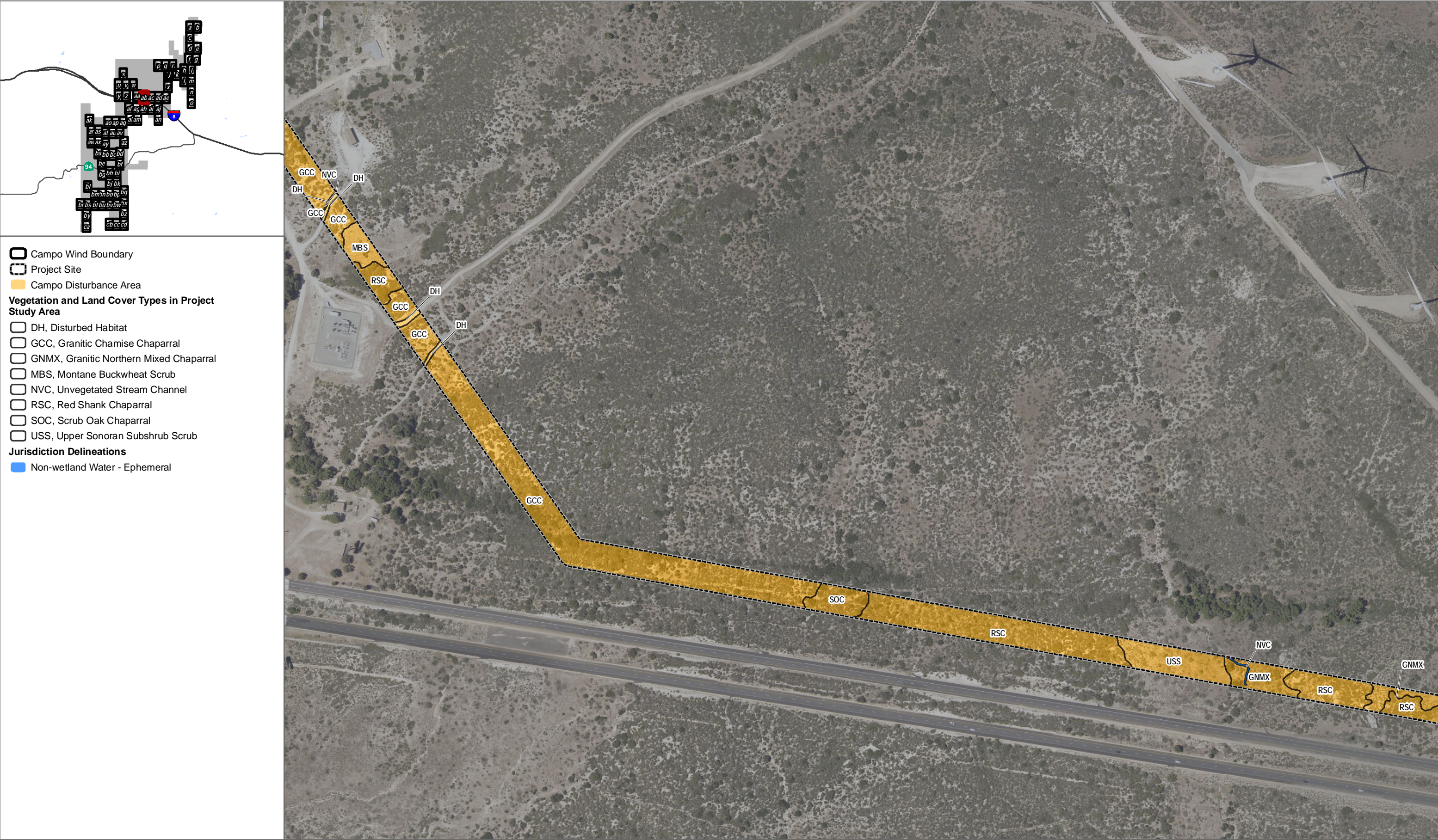
Campo Wind with Boulder Brush Facilities Biological Technical Report





SOURCE: Source: SANGIS 2017

FIGURE 14aa
Impacts to Vegetation Communities and Landcovers
Campo Wind with Boulder Brush Facilities Biological Technical Report



SOURCE: Source: SANGIS 2017



SOURCE: Source: SANGIS 2017

FIGURE 14ad

Impacts to Vegetation Communities and Landcovers

Campo Wind with Boulder Brush Facilities Biological Technical Report

DUDEK

0 200 400 Feet

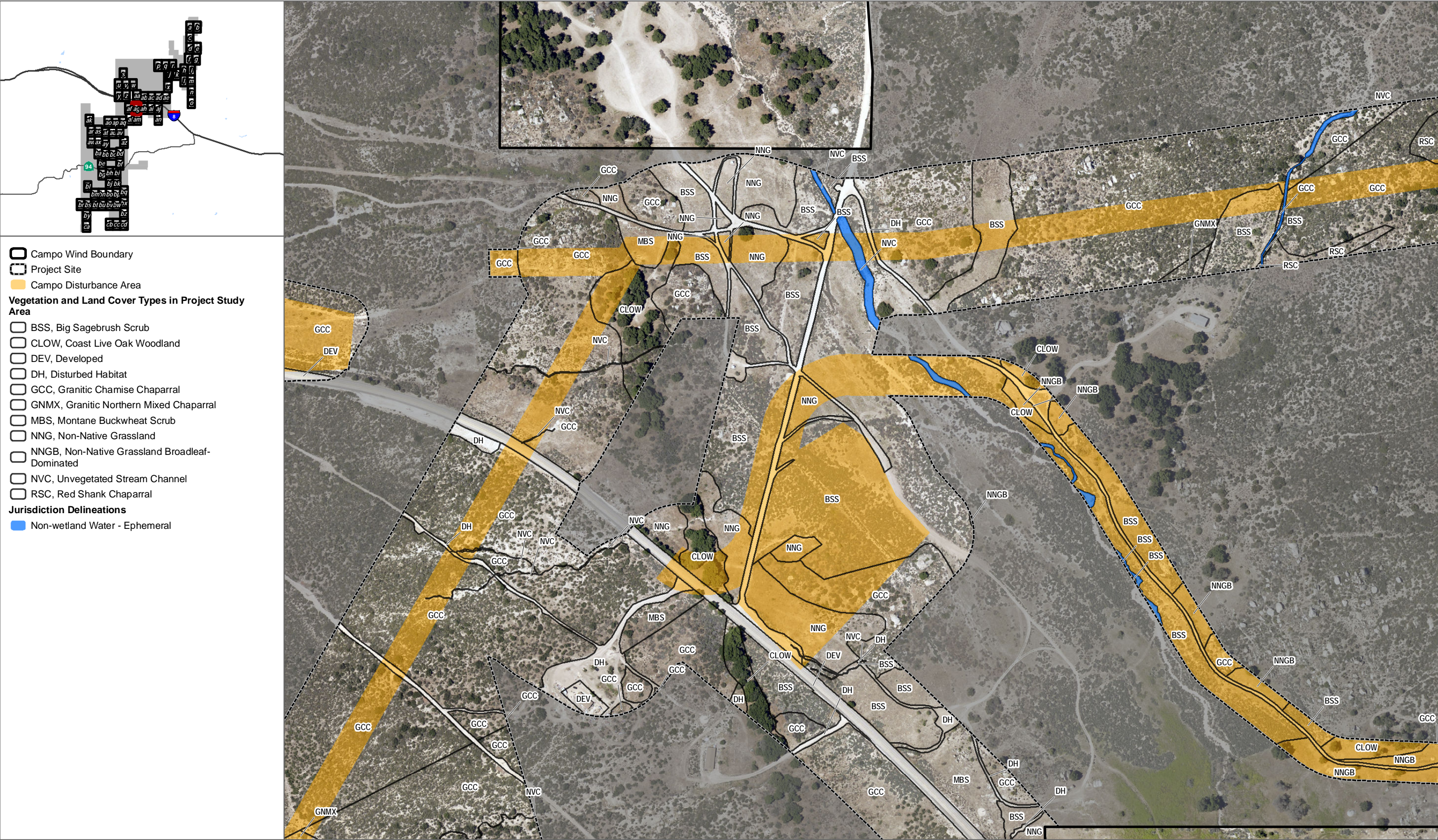


SOURCE: Source: SANGIS 2017

FIGURE 14ae

Impacts to Vegetation Communities and Landcovers

Campo Wind with Boulder Brush Facilities Biological Technical Report

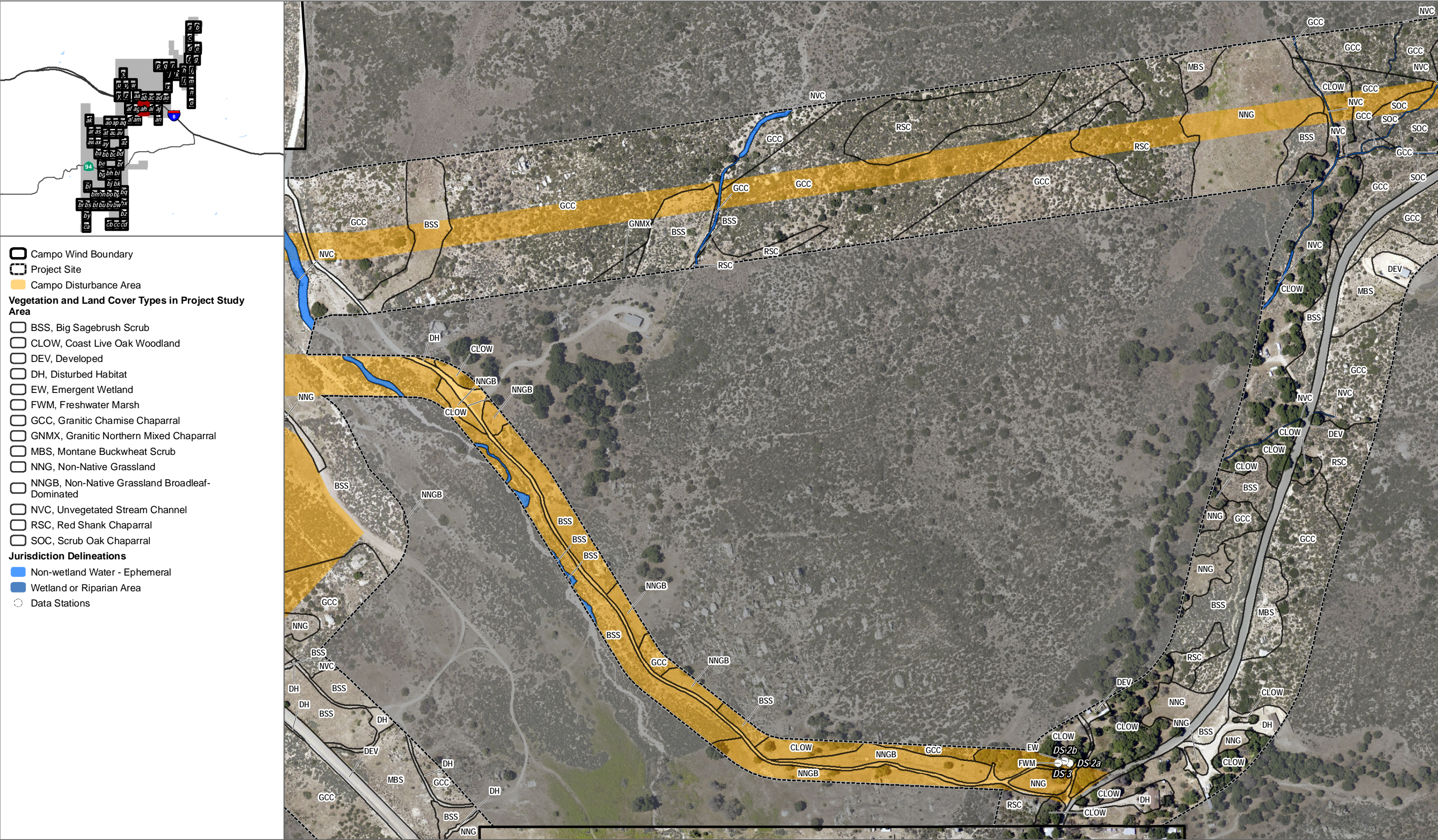


SOURCE: Source: SANGIS 2017

FIGURE 14ag

Impacts to Vegetation Communities and Landcovers

Campo Wind with Boulder Brush Facilities Biological Technical Report





SOURCE: Source: SANGIS 2017

FIGURE 14ai
Impacts to Vegetation Communities and Landcovers
Campo Wind with Boulder Brush Facilities Biological Technical Report



SOURCE: Source: SANGIS 2017

FIGURE 14aj

Impacts to Vegetation Communities and Landcovers

Campo Wind with Boulder Brush Facilities Biological Technical Report

DUDEK

0 200 400 Feet



SOURCE: Source: SANGIS 2017

FIGURE 14ak
Impacts to Vegetation Communities and Landcovers
 Campo Wind with Boulder Brush Facilities Biological Technical Report



SOURCE: Source: SANGIS 2017



SOURCE: Source: SANGIS 2017

FIGURE 14am
Impacts to Vegetation Communities and Landcovers
Campo Wind with Boulder Brush Facilities Biological Technical Report



SOURCE: Source: SANGIS 2017

FIGURE 14an

Impacts to Vegetation Communities and Landcovers

Campo Wind with Boulder Brush Facilities Biological Technical Report

DUDEK 0 200 400 Feet



SOURCE: Source: SANGIS 2017

FIGURE 14ao

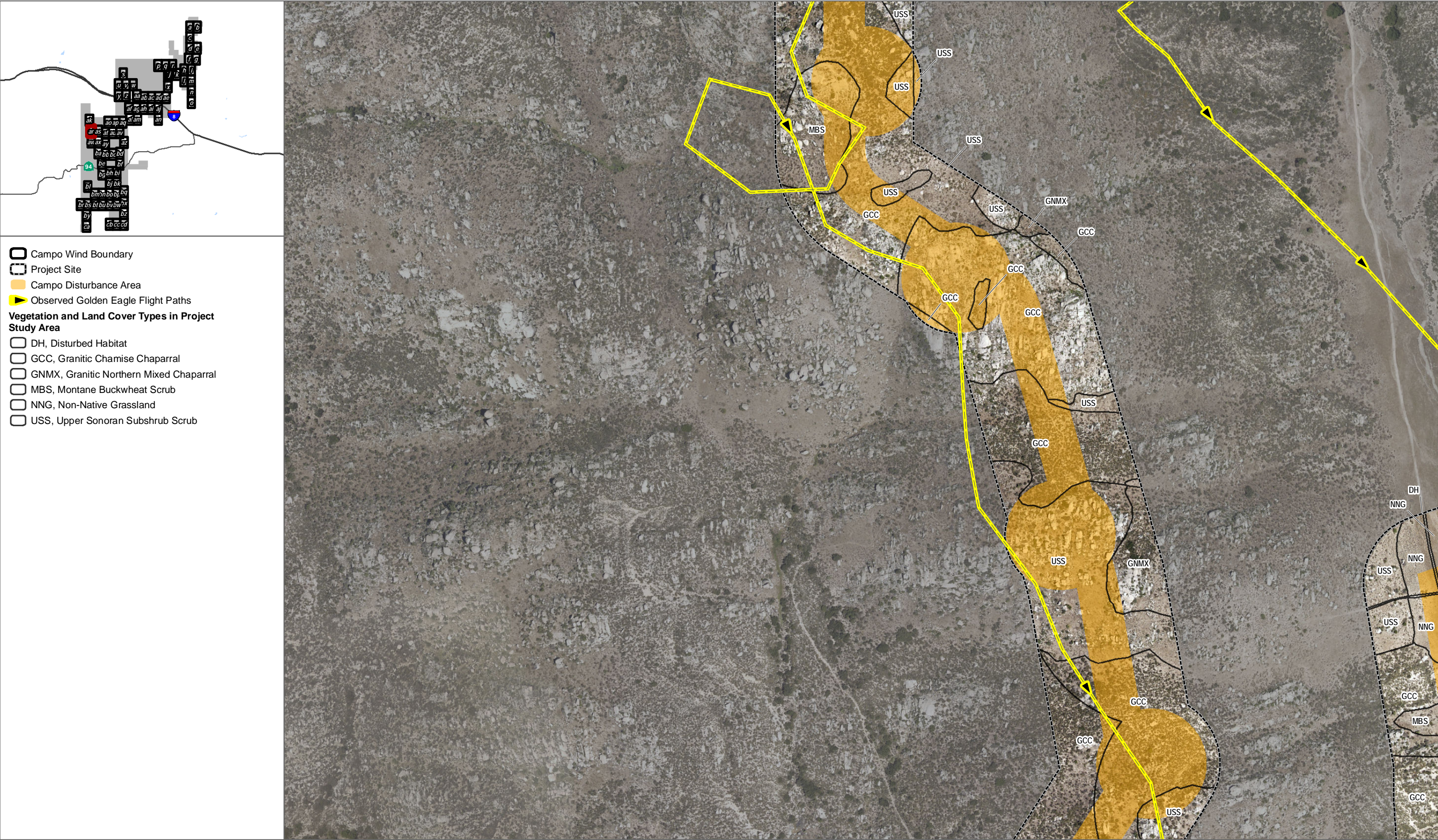
Impacts to Vegetation Communities and Landcovers

Campo Wind with Boulder Brush Facilities Biological Technical Report



SOURCE: Source: SANGIS 2017

FIGURE 14aq
Impacts to Vegetation Communities and Landcovers
Campo Wind with Boulder Brush Facilities Biological Technical Report



SOURCE: Source: SANGIS 2017

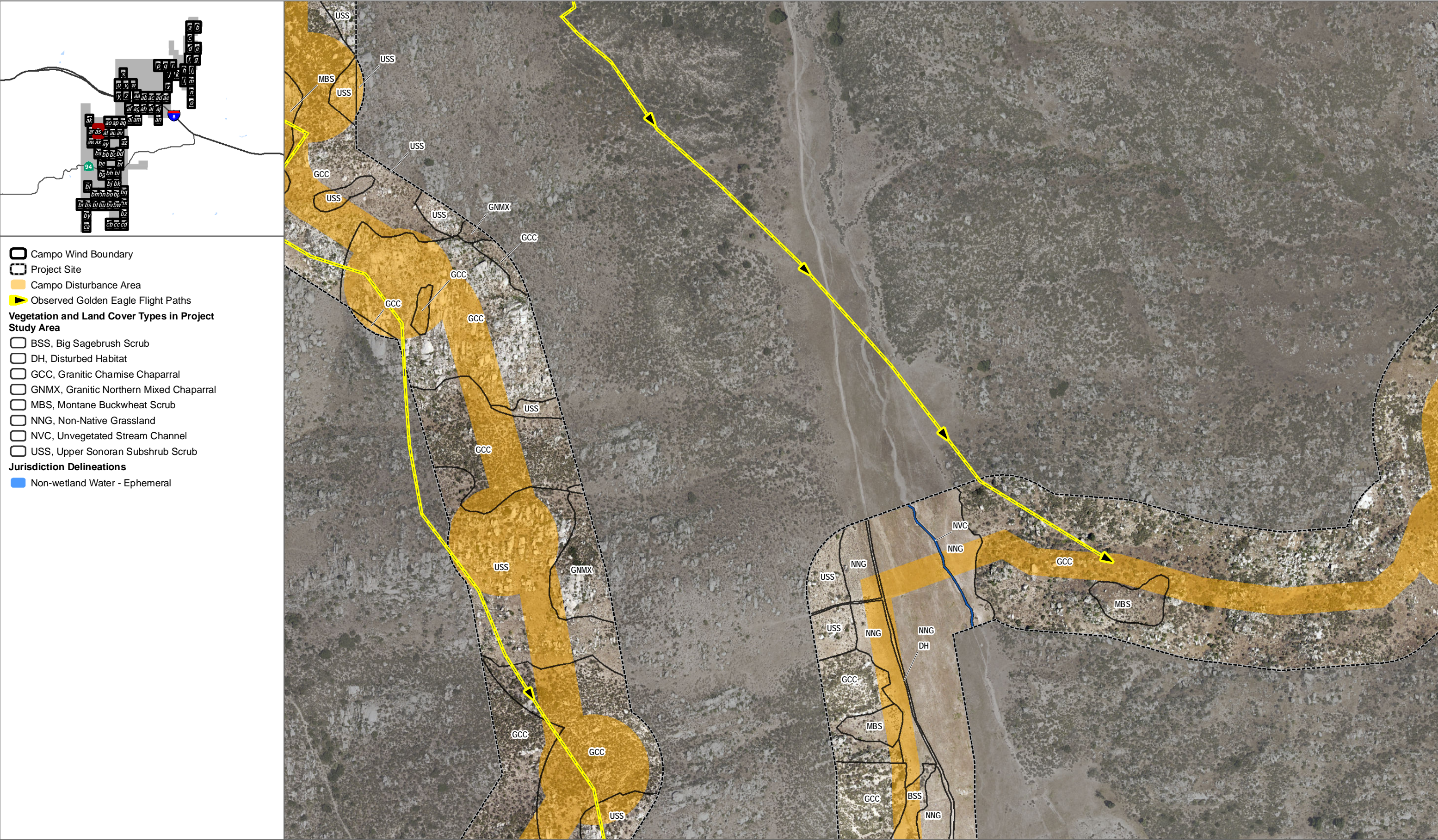
FIGURE 14ar

Impacts to Vegetation Communities and Landcovers

Campo Wind with Boulder Brush Facilities Biological Technical Report

DUDEK

0 200 400 Feet



SOURCE: Source: SANGIS 2017

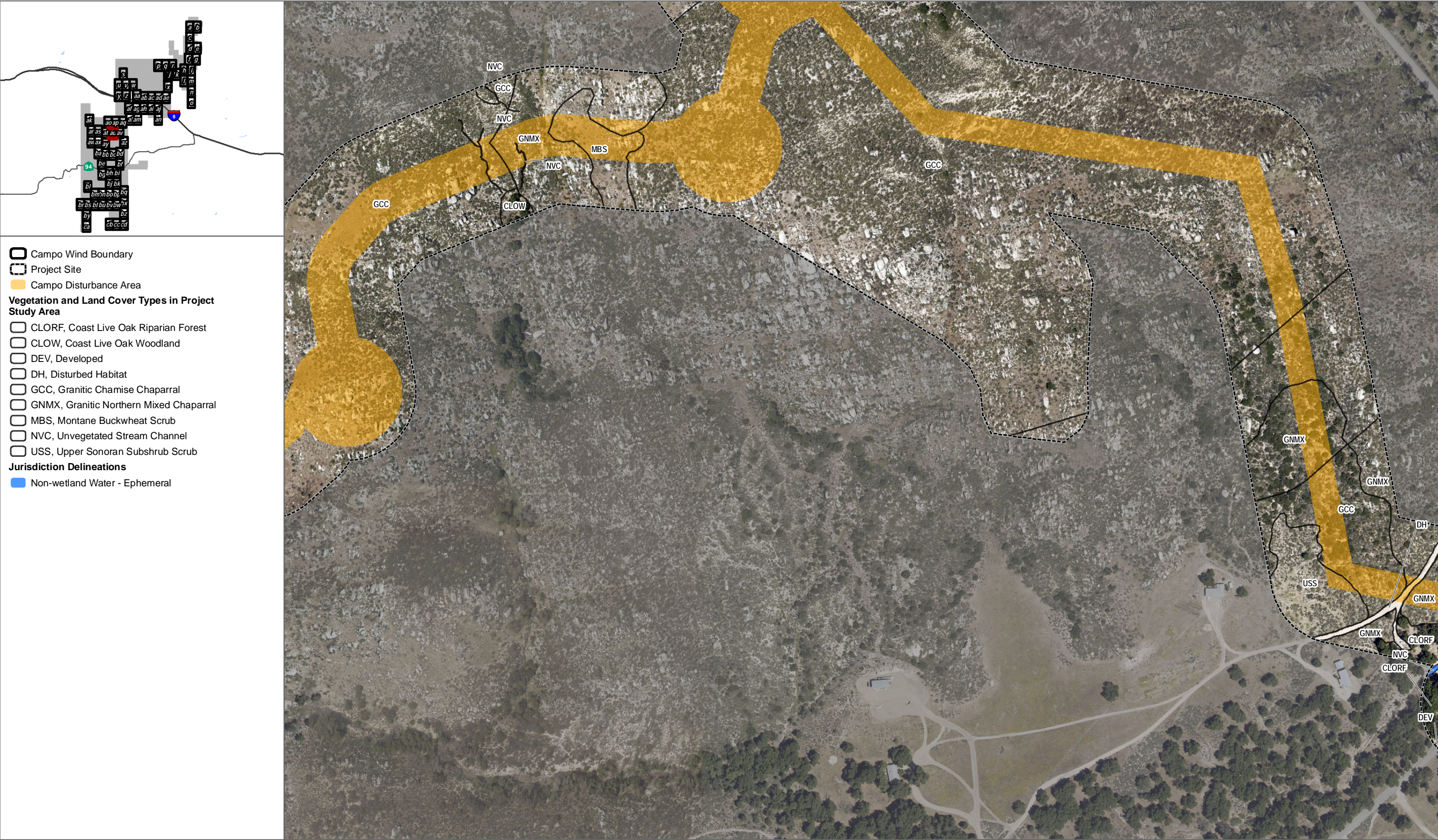
FIGURE 14as

Impacts to Vegetation Communities and Landcovers

Campo Wind with Boulder Brush Facilities Biological Technical Report



SOURCE: Source: SANGIS 2017



SOURCE: Source: SANGIS 2017

FIGURE 14au

Impacts to Vegetation Communities and Landcovers

Campo Wind with Boulder Brush Facilities Biological Technical Report

DUDEK

0 200 400 Feet



SOURCE: Source: SANGIS 2017

0 200 400 Feet

DUDEK

FIGURE 14av

Impacts to Vegetation Communities and Landcovers

Campo Wind with Boulder Brush Facilities Biological Technical Report





SOURCE: Source: SANGIS 2017

DUDEK

0 200 400 Feet

FIGURE 14ay

Impacts to Vegetation Communities and Landcovers

Campo Wind with Boulder Brush Facilities Biological Technical Report



SOURCE: Source: SANGIS 2017

FIGURE 14az

Impacts to Vegetation Communities and Landcovers

Campo Wind with Boulder Brush Facilities Biological Technical Report